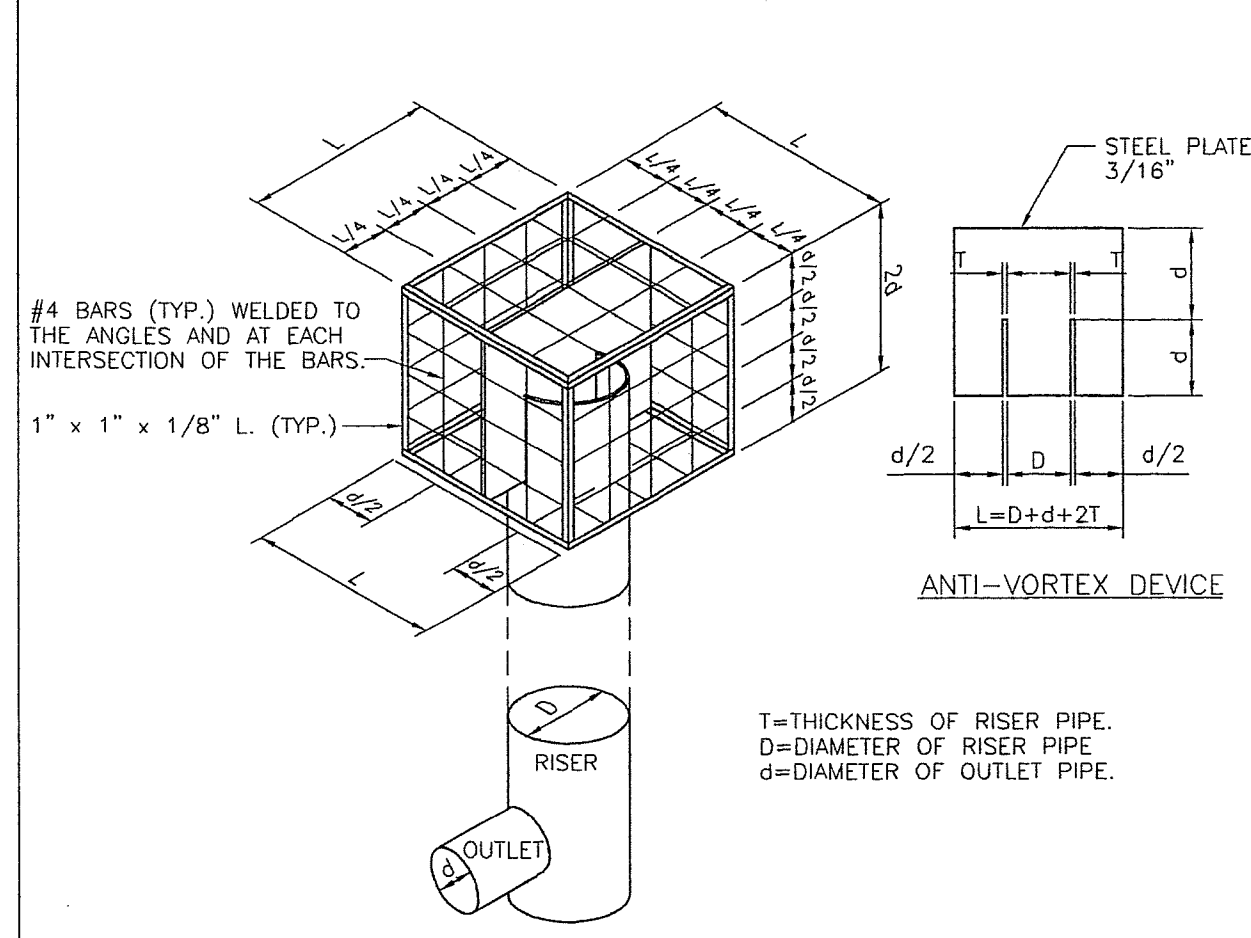
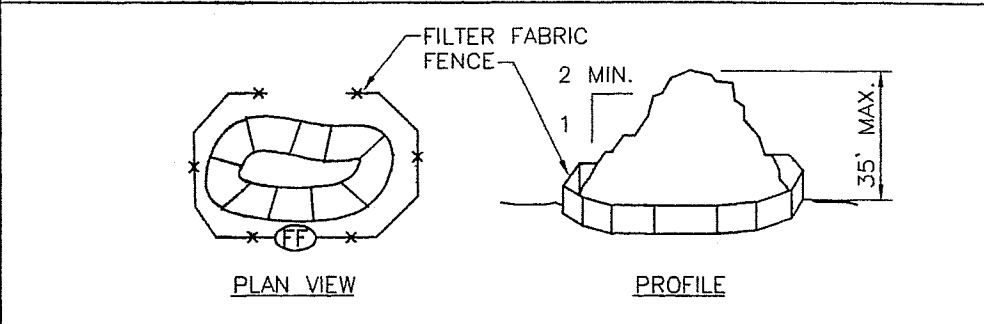
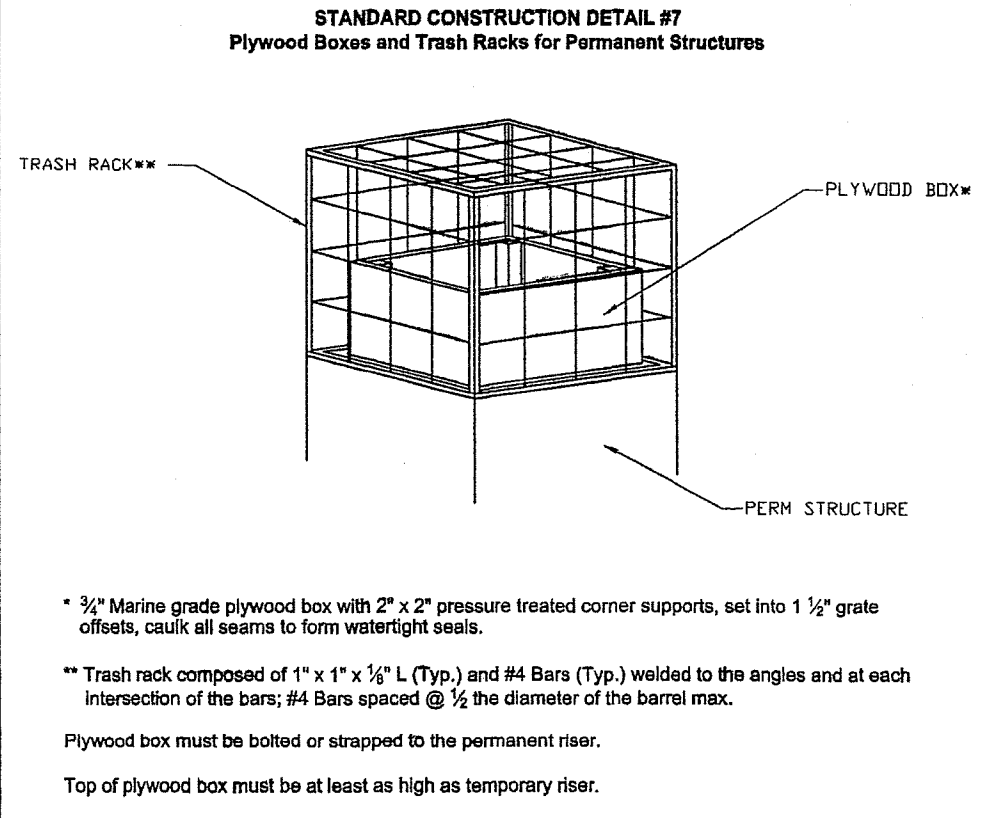


FIGURE 9
Typical Trash Rack and Anti-vortex Device

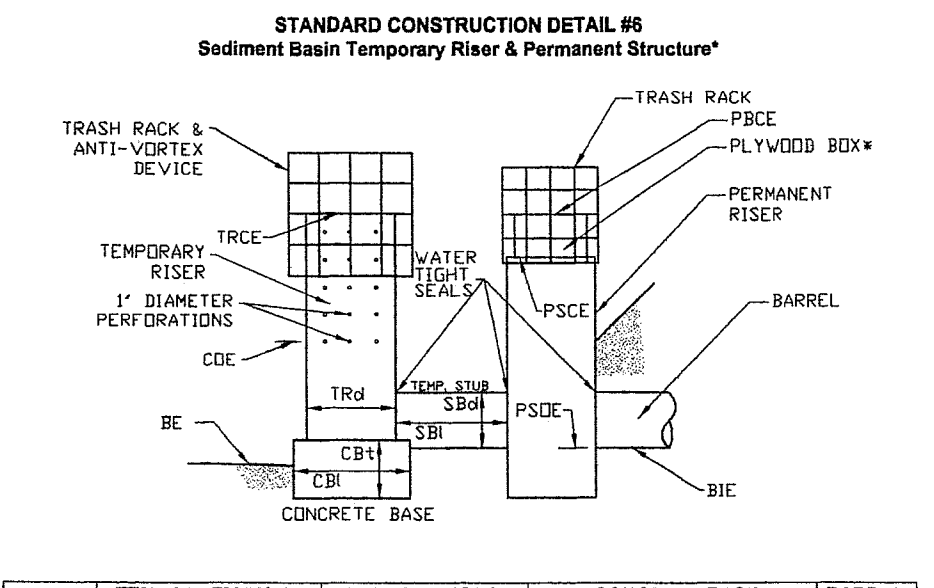


TRASH RACK AND ANTI-VORTEX DEVICE

THE PRINCIPAL SPILLWAY RISER MUST BE SECURELY ANCHORED AND ATTACHED TO THE OUTLET BARREL WITH A WATERTIGHT SEAL.



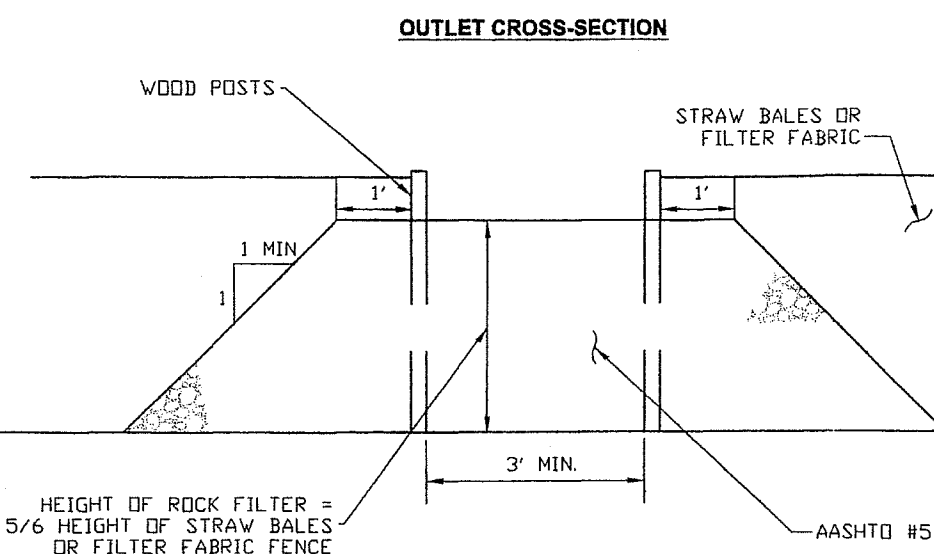
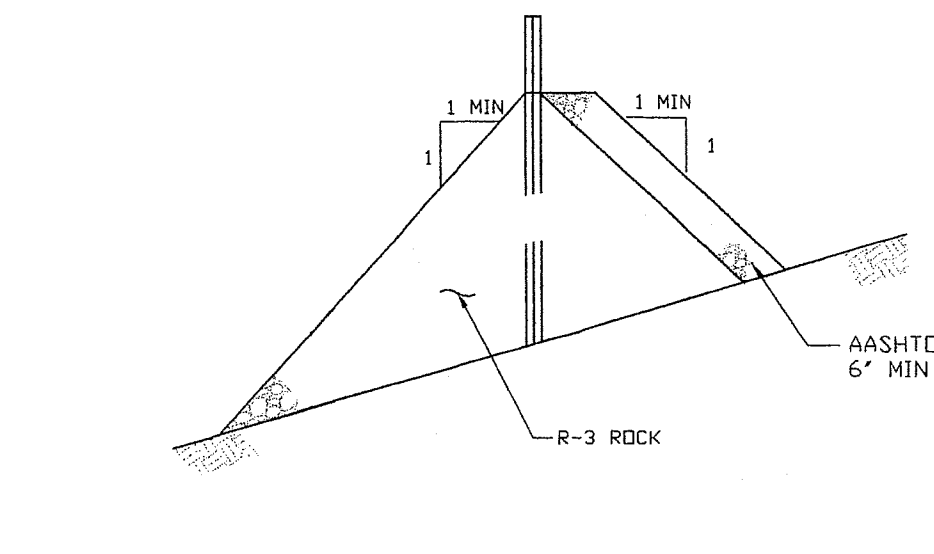
TOPSOIL STOCKPILE DETAIL
N.T.S.
NOTES:
1. SILT FENCE MUST BE PLACED AROUND THE PERIMETER OF ALL STOCKPILES.
2. IMMEDIATELY APPLY TEMPORARY SEEDING TO ALL STOCKPILES WHICH WILL REMAIN IN PLACE 20 DAYS OR MORE.



BASIN NO.	TEMPORARY RISER			PERFORATIONS			CONCRETE BASE			BARREL INLET ELEV. (FT)
	DIA TR4 (IN)	CREST ELEV. (FT)	MAT'L	NO. HOLES PER ROW	VERTICAL SPACING OF ROWS (FT)	LENGTH SBI (IN)	WIDTH CBI (IN)	THICK. CBI (IN)		
1	18	222.5		2	98				216	

BASIN NO.	TEMPORARY STUB			PERMANENT STRUCTURE			OUTLET ELEV. (FT)
	DIA SBI (IN)	INVERT ELEV. (FT)	MAT'L	LENGTH SBI (FT)	CREST ELEV. (FT)	OPENING LENGTH PSCI (IN)	
1	18	18		3	219	18	216.2

STANDARD CONSTRUCTION DETAIL #18
Rock Filter Outlets



Sediment must be removed when accumulations reach 1/3 the height of the outlet.

