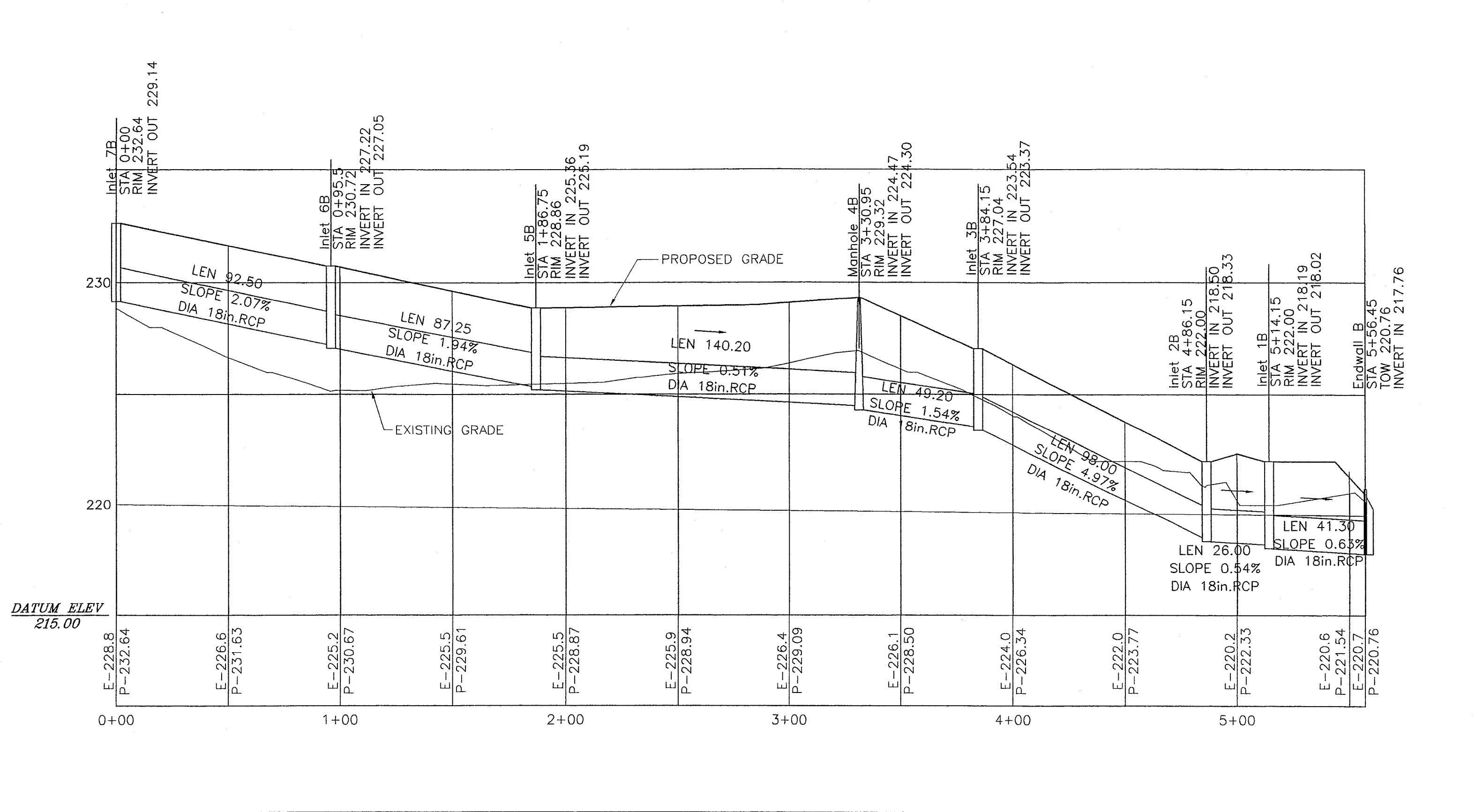
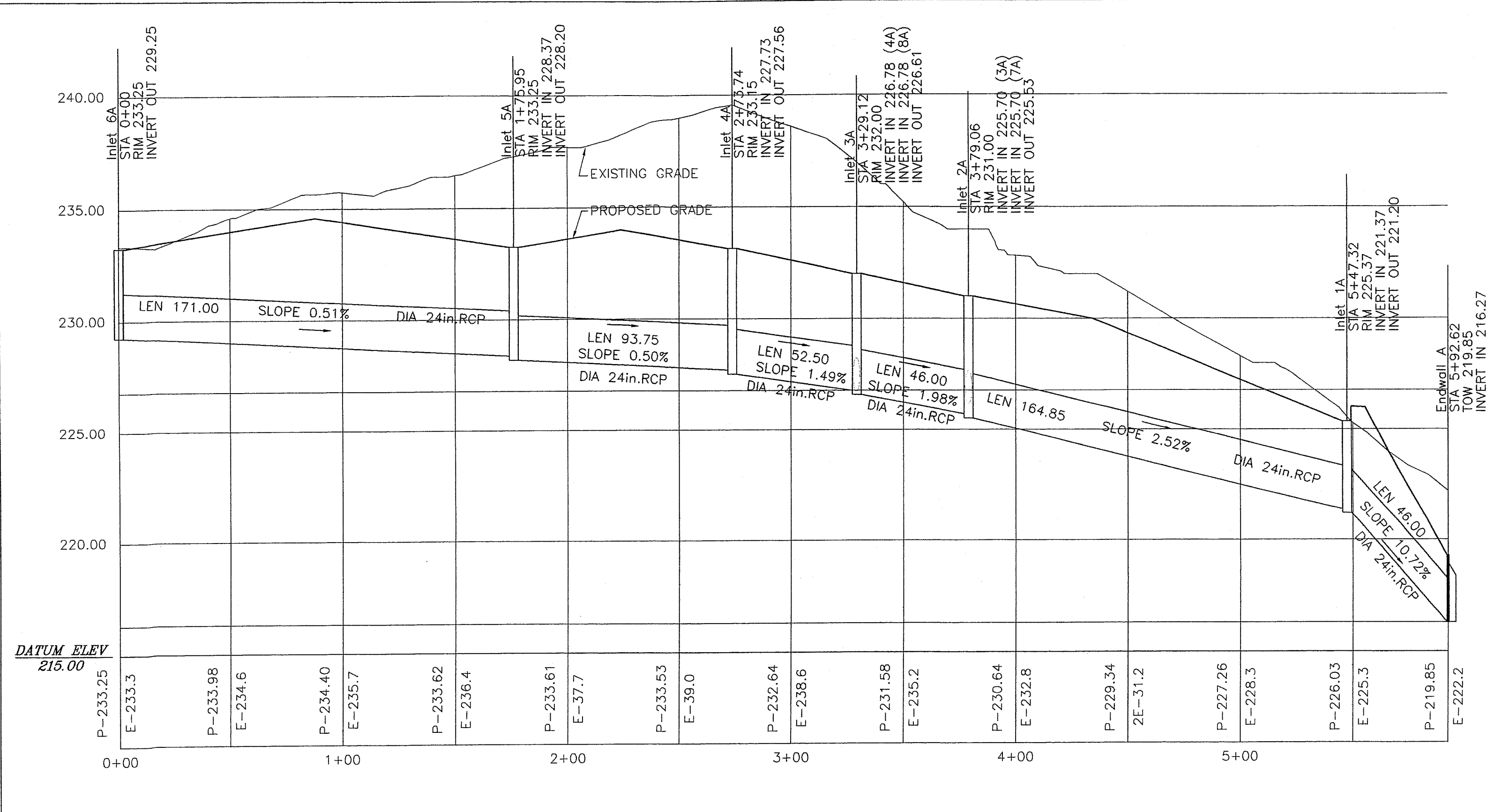


STORMWATER PROFILES
SCALE: VERTICAL: 1"=4'
HORIZONTAL: 1"=40'



Preliminary/Final

This document, and all reports, plans, specifications, field data, notes and other documents, including all documents on electronic media, prepared by LANDMARK Engineers, Inc. as instruments of service shall remain the sole and exclusive property of LANDMARK Engineers, Inc. The information contained herein is licensed only for limited use by the intended recipient, and no license, permission or authority is extended, directly or implied, to any party without the written authorization of LANDMARK Engineers, Inc.

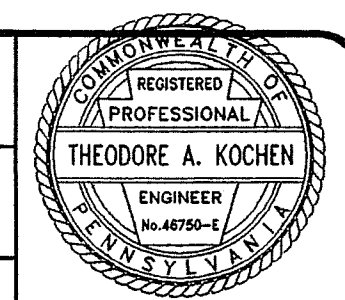
General Notes

No.	Revision/Issue	Date
2	Revised Per Township Engineers Letter Dated August 22, 2005	08-15-05
1	Revised Per Township Engineers Letter Dated June 23, 2005	07-01-05

No.	Revision/Issue	Date
2	Revised Per Township Engineers Letter Dated August 22, 2005	08-15-05
1	Revised Per Township Engineers Letter Dated June 23, 2005	07-01-05

Firm Name and Address
LANDMARK ENGINEERS, INC.
555 SOUTH SECOND AVENUE
BUILDING B, SUITE 300
COLLEGEVILLE, PA 19426
TEL: (610)489-4010 FAX: (610)489-5510

Sheet No.
4 of 13
Drawn By
S.P.K.
Checked By
T.A.K.
Theodore A. Kochen - PE-46750-e
Stormwater Profiles



Project Name and Address
Evergreen Road Self Storage
Limerick Township
Montgomery County, PA
Project L068.001
Date 4-08-05
Scale As Note
Drawing No. **4**